

Breast imaging

Dr Alison Duncan

Dr Aradhana Narayan Goud

Radiologists UHCW

Screening mammography

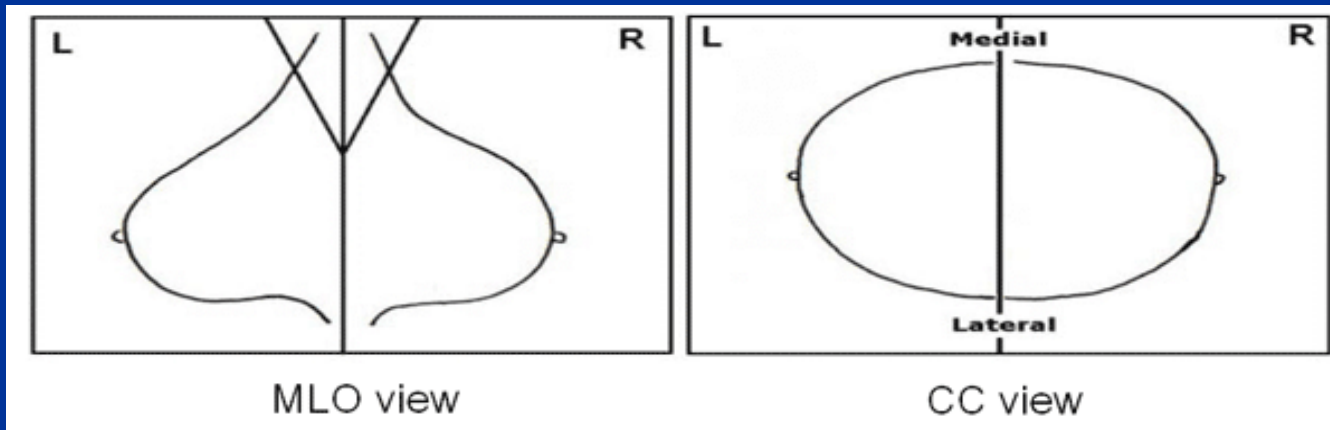
- 2 readers for each mammogram
- Radiologists and advanced radiographic practitioner readers.
- Arbitration/consensus if discrepancy

Mammography

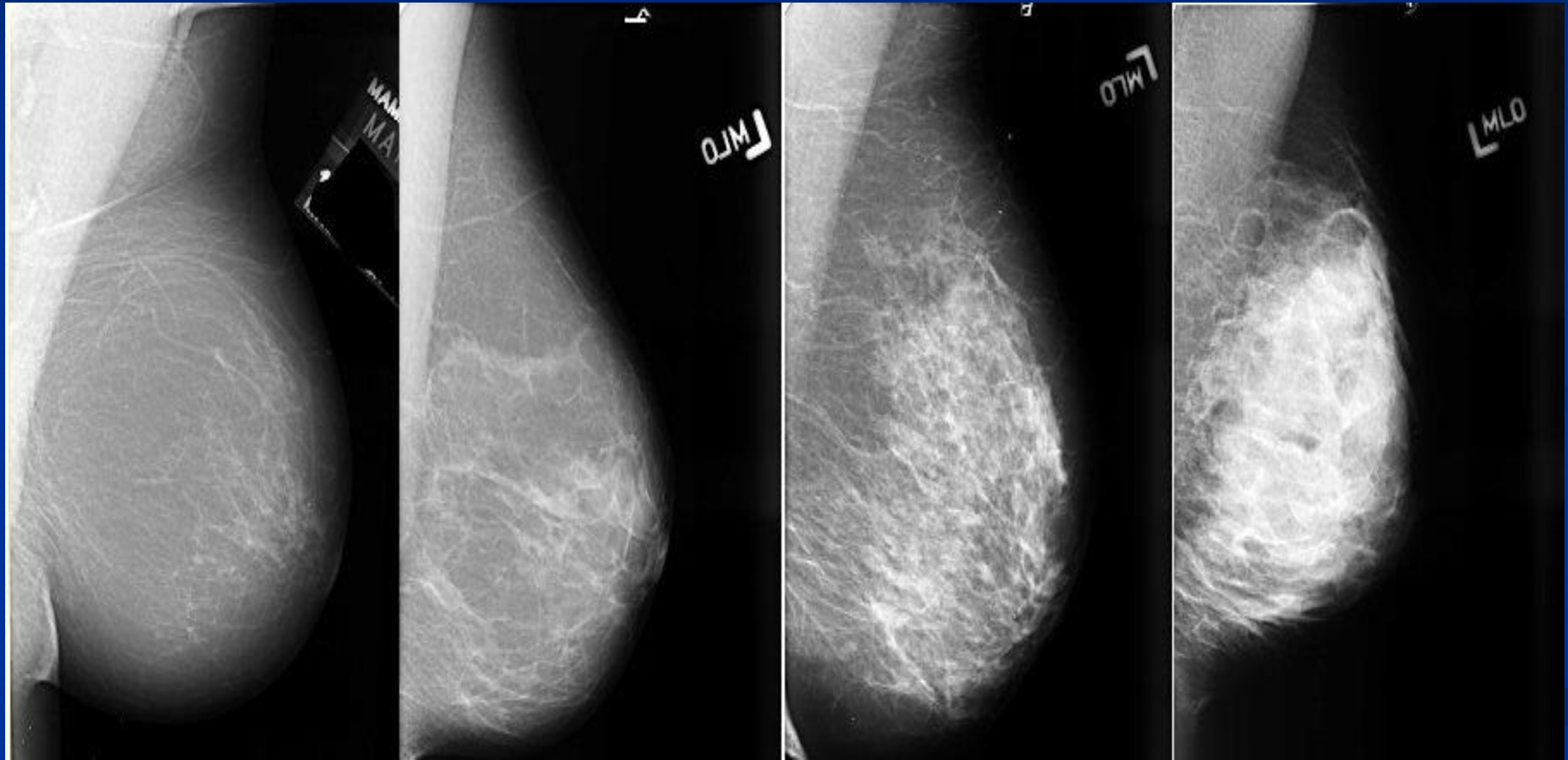


Mammography

- X-rays of the breast
- 2 Views
- Medio-lateral Oblique
- Cranio-caudal



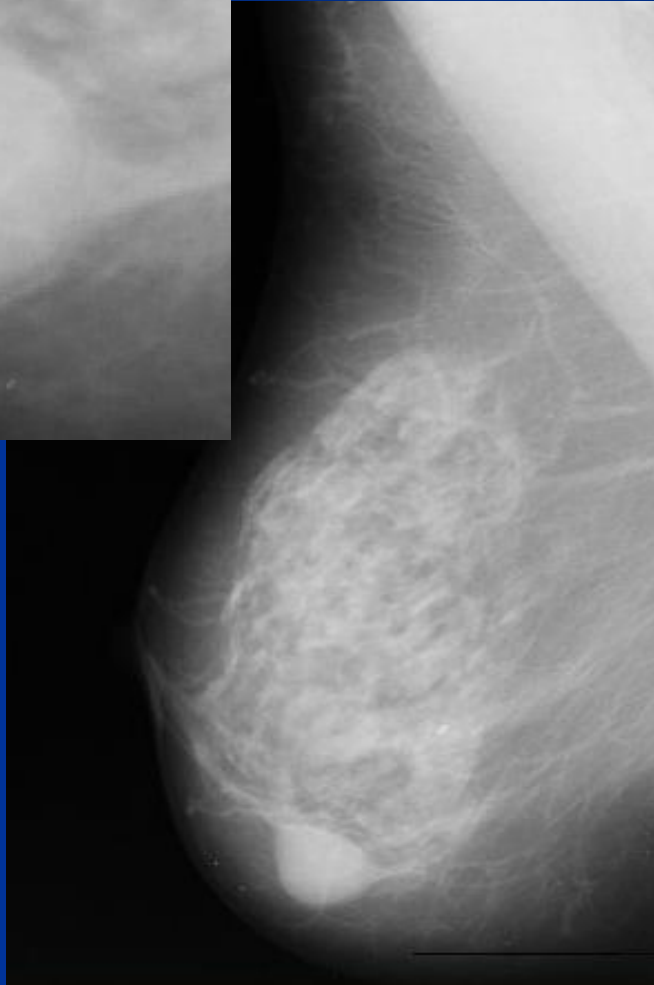
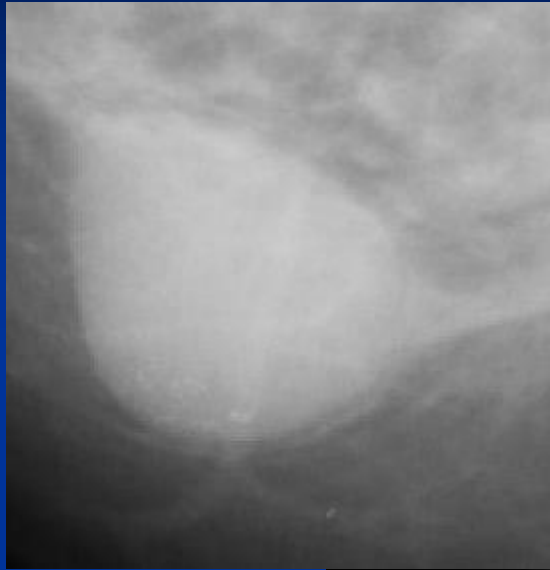
Oblique mammograms



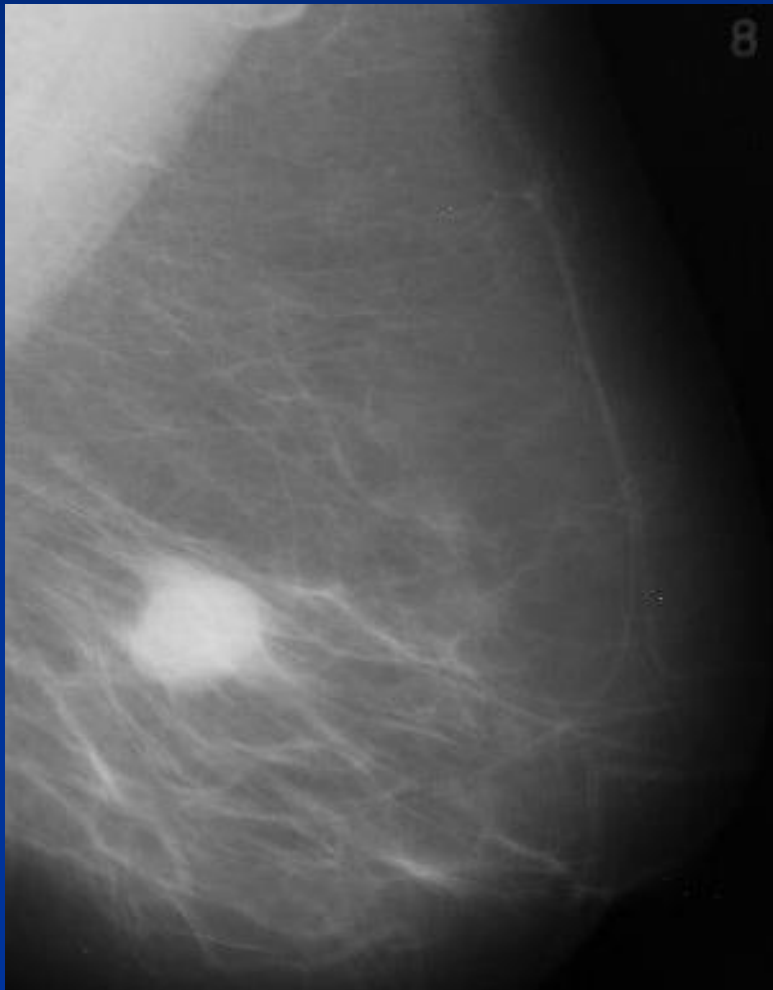
Assessment clinic

- Women with possible abnormalities are recalled to the breast clinic in UHCW for:
- clinical examination,
- further mammograms if necessary
- breast ultrasound
- if normal, discharged back to screening in 3 yrs
- if abnormality detected, biopsy is taken using US if visible, or stereotactic biopsy if only seen on mammography

Well defined masses



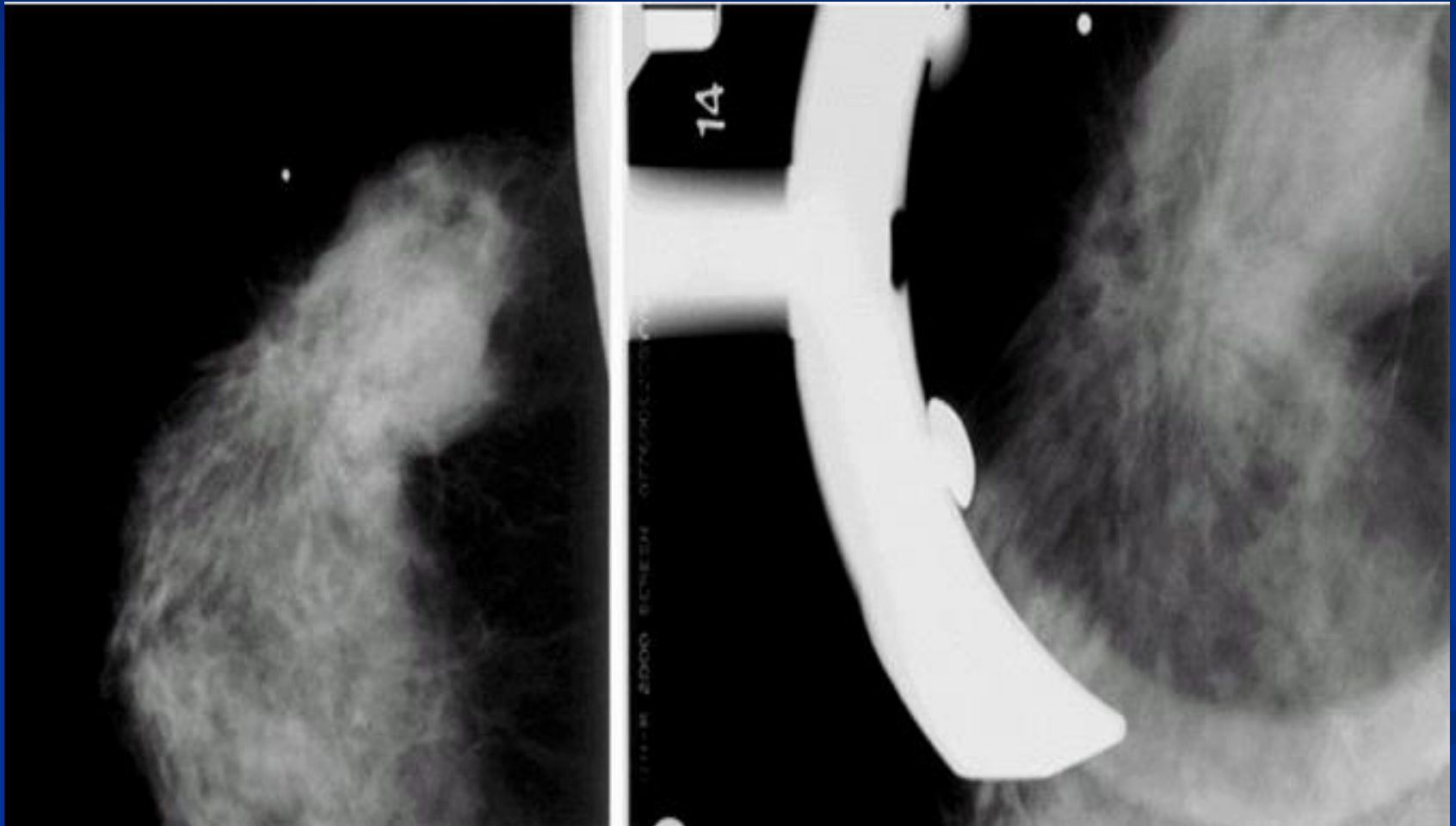
Ill defined mass



Spiculate mass

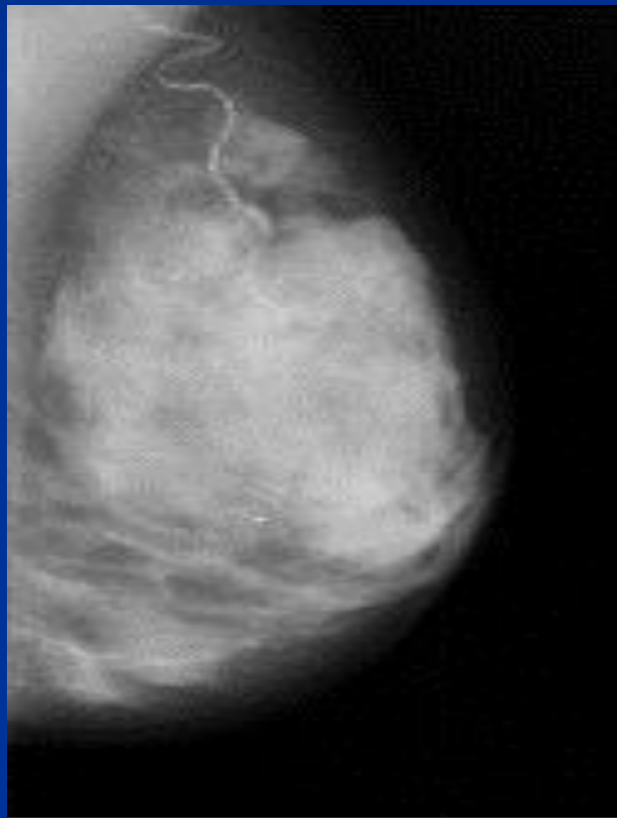


Stromal distortion



Breast benign calcification

■ Vascular



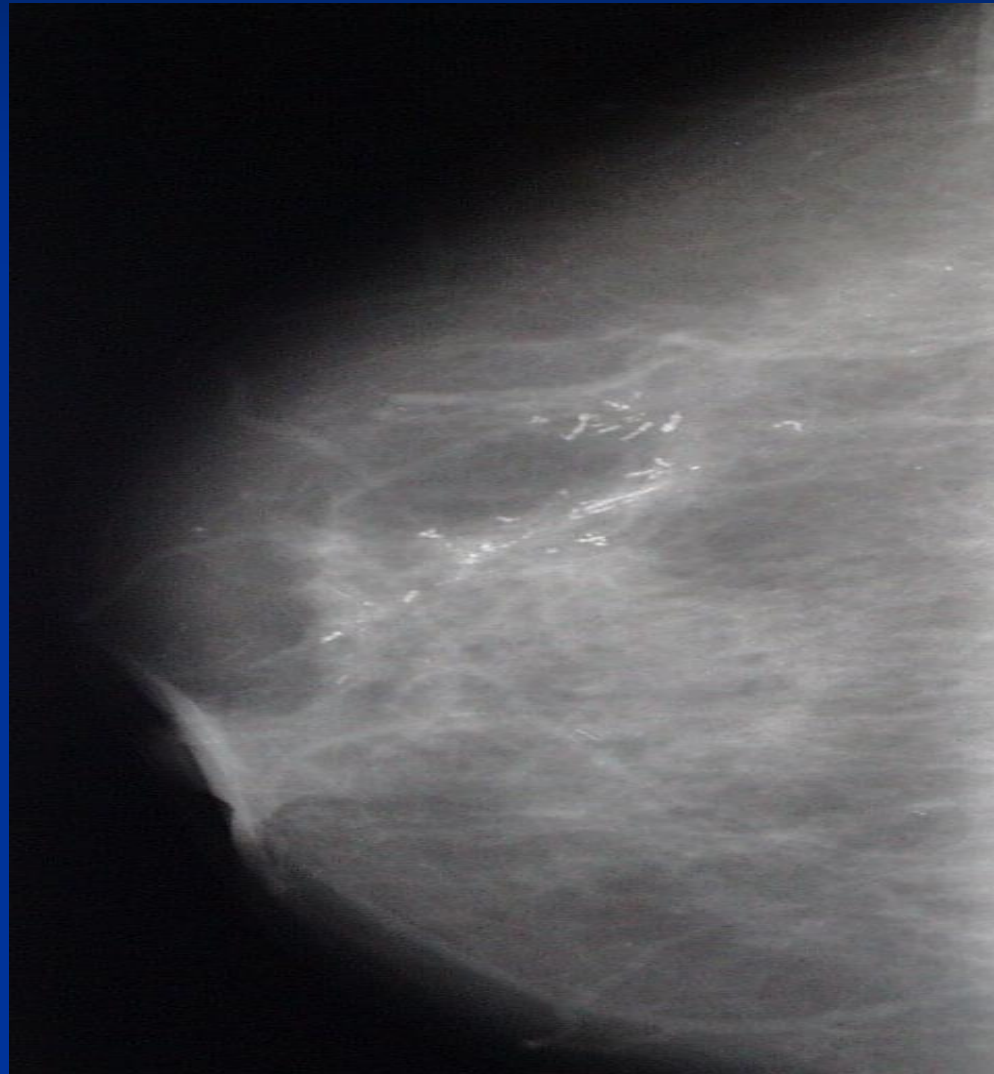
Popcorn



Scattered



Suspicious calcification

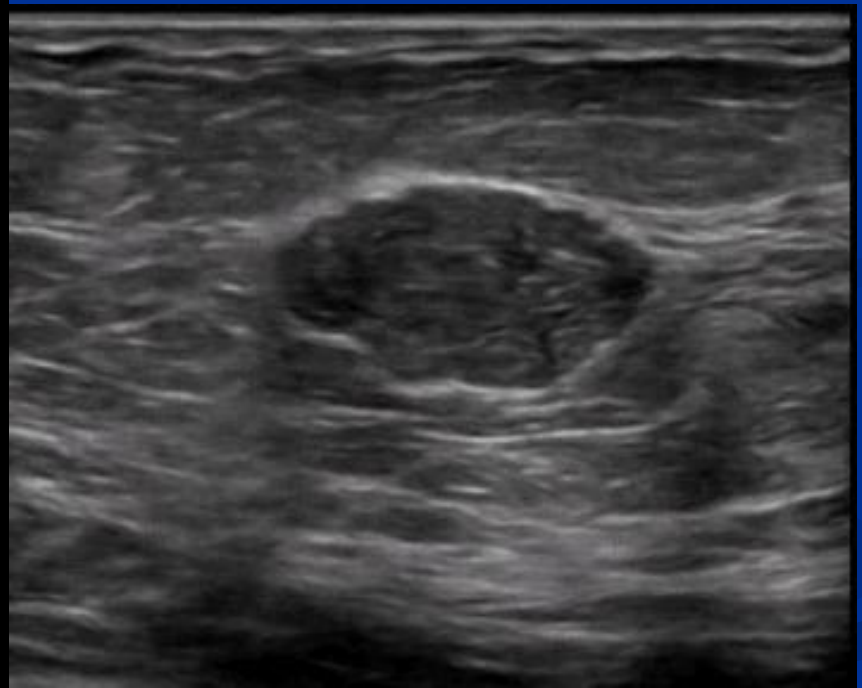


Breast Ultrasound

■ Cyst

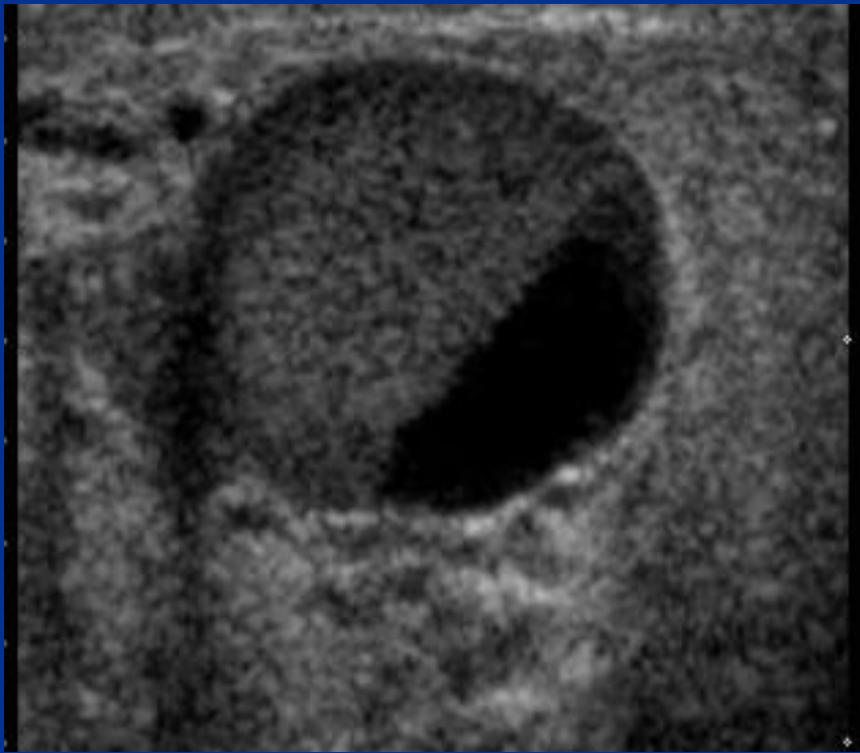


Fibroadenoma



Ultrasound indeterminate

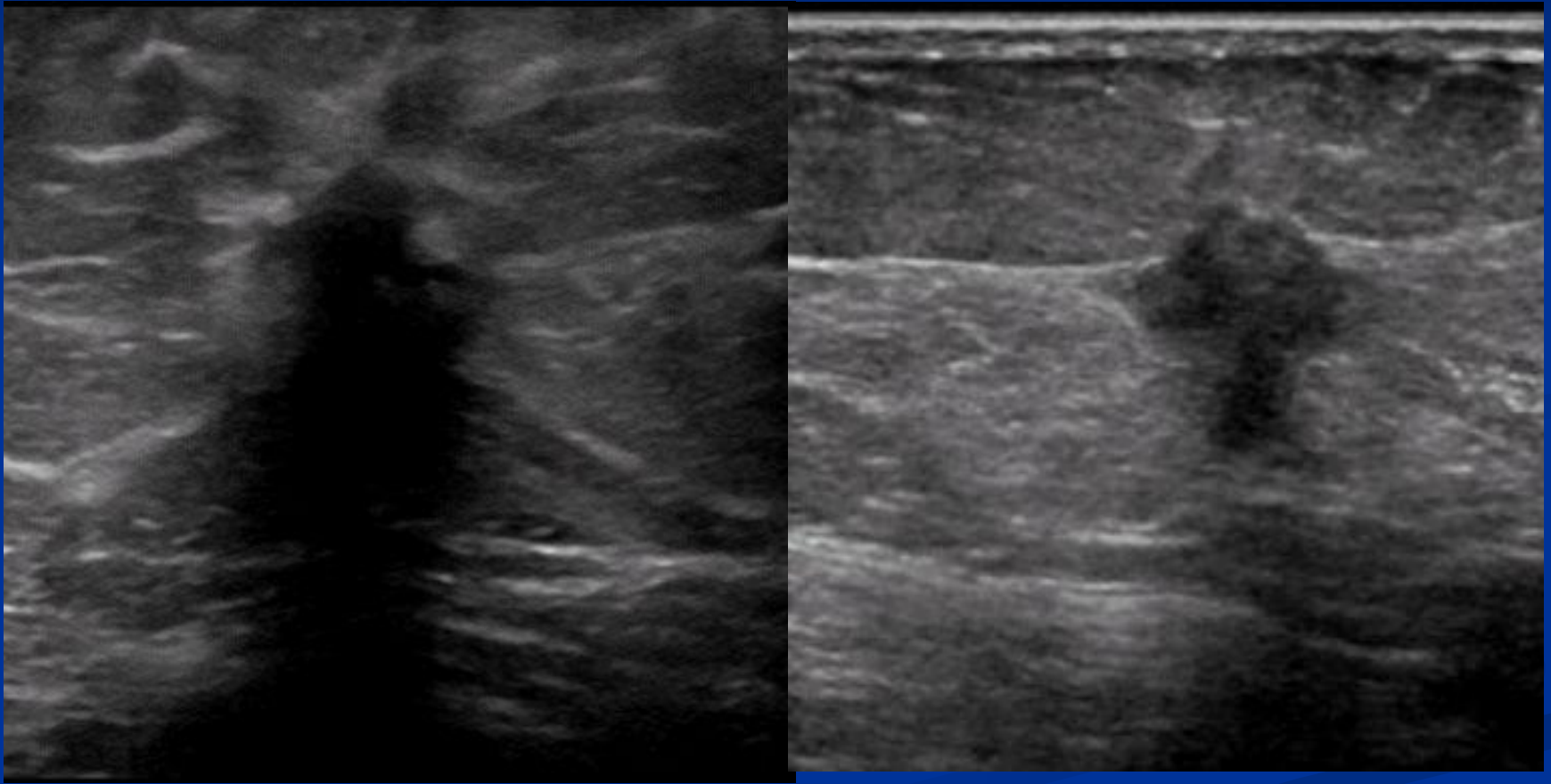
■ Complex cyst



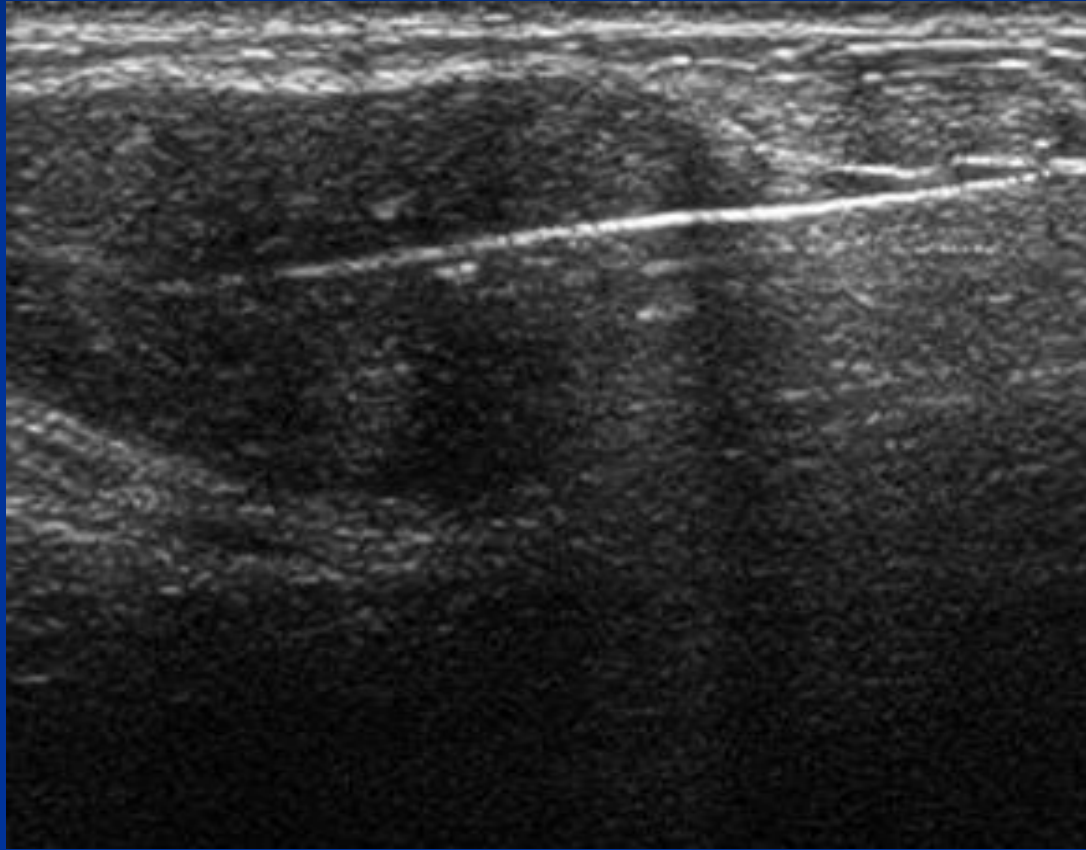
Abscess



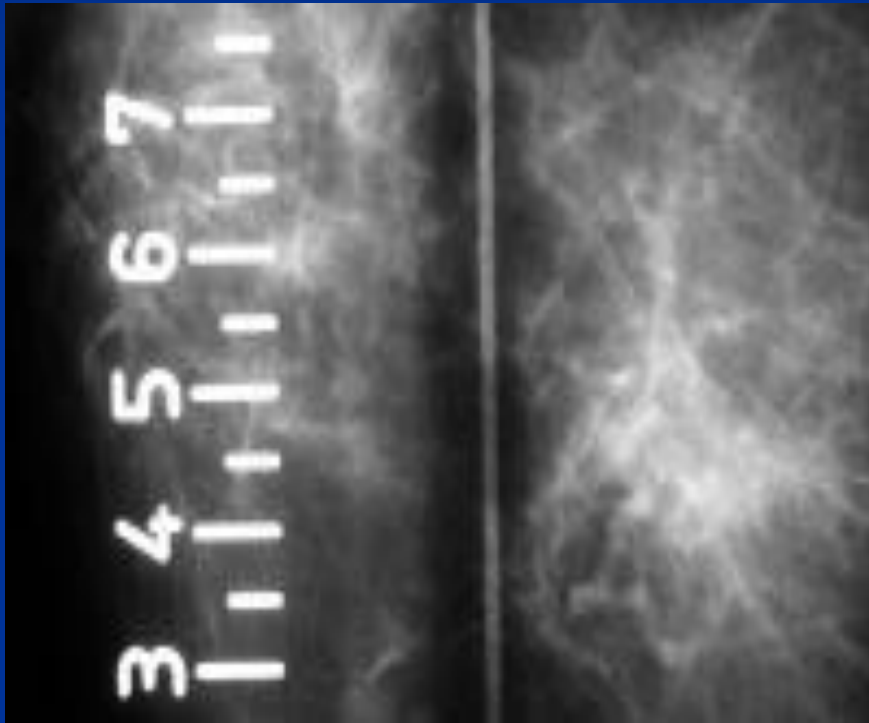
Breast Ultrasound Carcinoma



Ultrasound core biopsy



Breast localisation



Symptomatic patients

Mammography 2 views -oblique and craniocaudal-
routinely performed >40yrs

Under 40 years, ultrasound is first-line
investigation

Also undergo triple assessment and cases
discussed at MDM

Triple Assessment

Triple assessment :

P value = clinical

R value = radiological

C/ B value = cytology or core biopsy

All cases discussed at breast multidisciplinary meeting , and management plan made.

Breast MRI

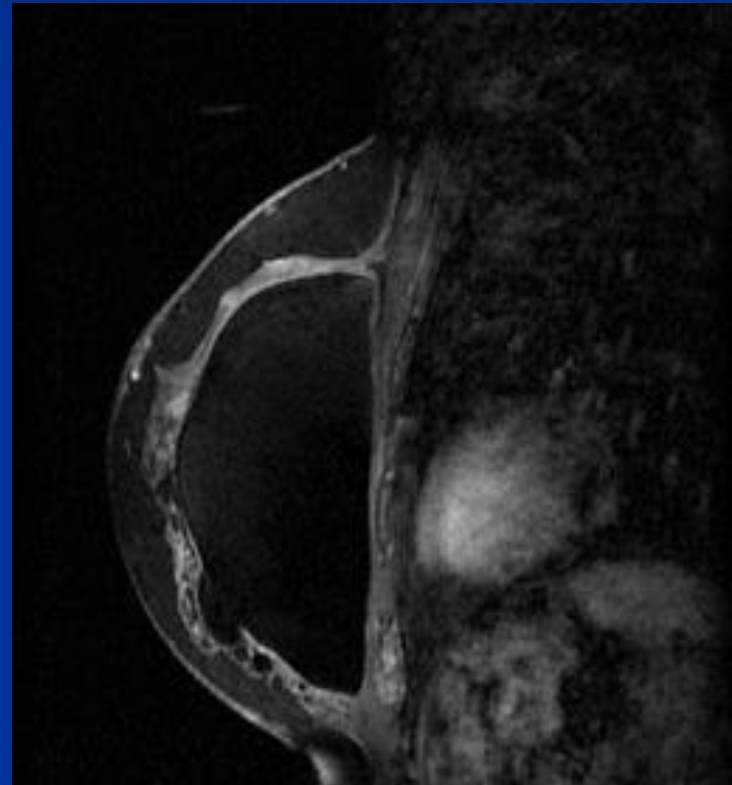
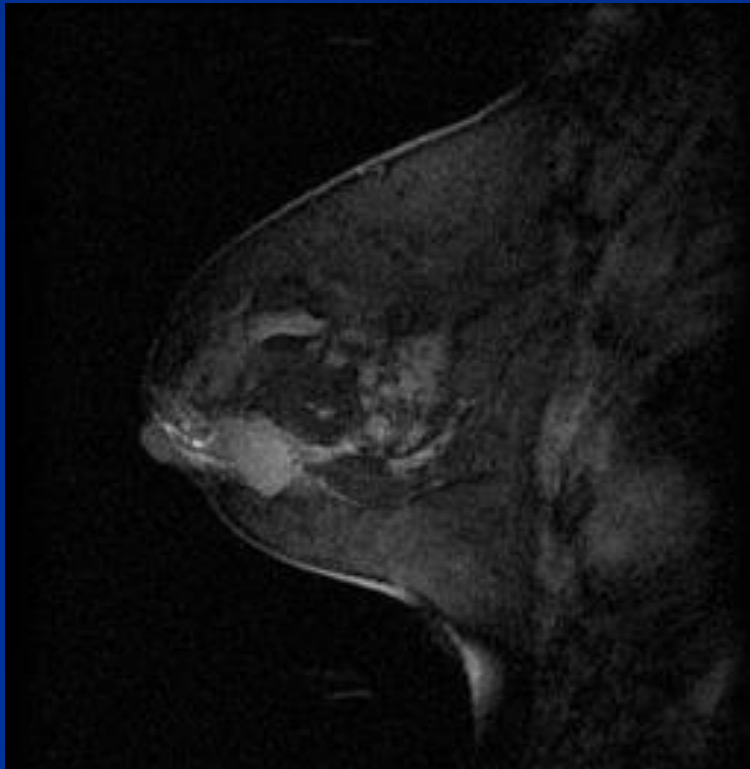
- In our practice, reserved for difficult cases including:
- positive axillary nodes with negative mammogram, to find occult primary
- lesions of indeterminate size on imaging -
?suitable for WLE?
- some lobular cancers
- possible recurrences in scars after WLE
- implant imaging eg rupture?

Breast MRI

- Breast coil, Gadolinium given iv and enhancement curves analysed



Breast MRI



Screening with MRI

- Not routine due to time taken, cost, availability
- Multicentre screening with MRI for BRCA1 and BRCA2 gene carriers
- High risk MRI screening contract now awarded to UHCW

■ THANK YOU
■ FOR
■ YOUR ATTENTION!

■ Grateful thanks to Dr Duncan for her slides

■