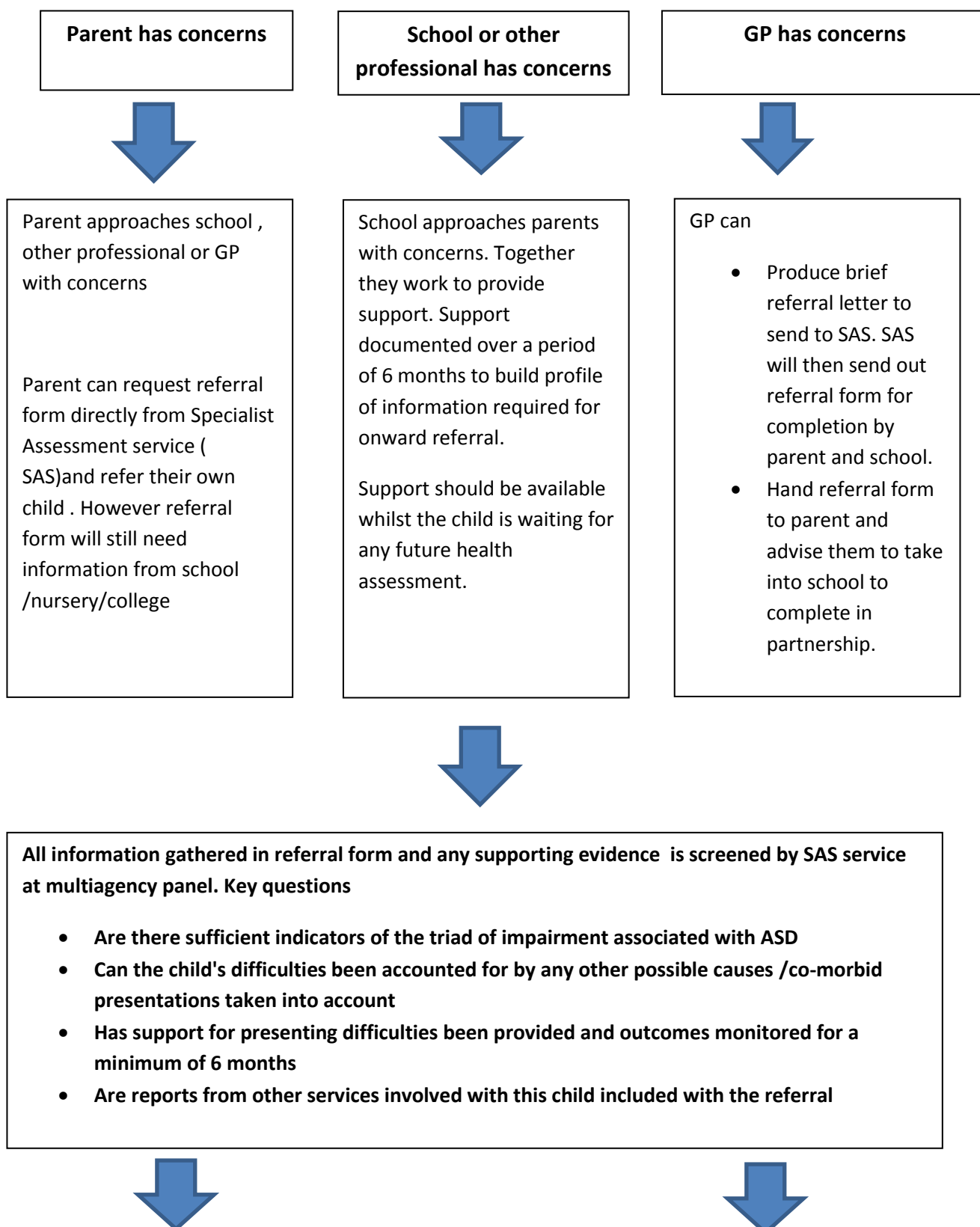


**AUTISM INITIAL PATHWAY**  
 For Children aged 0-18 years in Solihull with a Solihull GP



**Child accepted for full assessment  
Parent and all those involved are  
informed**



**Assessment carried out by  
Specialist Assessment Service based  
in CWPCC in line with ICD 10**



**Child meets the diagnostic criteria for a diagnosis of ASD or alternative explanations for  
difficulties given.**



**Full report provided from all assessments. Needs based plan developed. Child and  
family linked into appropriate services.**

**If ASD diagnosis is given then a hand over to specialist educational services is  
organised.**

**Child's case is closed to Specialist Assessment Service .**

**Full assessment for ASD not  
indicated from all collated  
information. Child signposted to  
other services. Parent and all those  
involved are informed**